


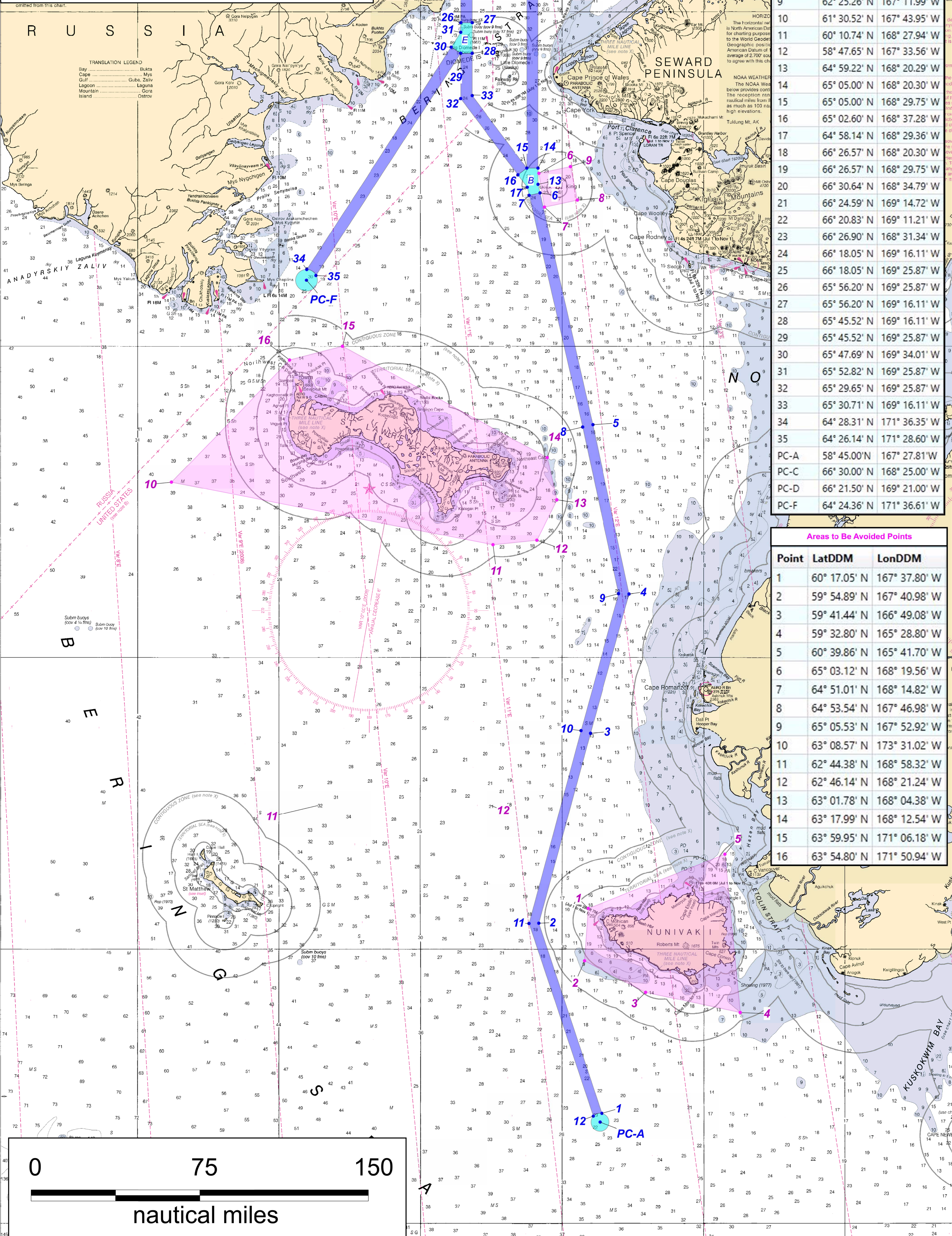
# Proposed Bering Strait Ship Routing

Graphic prepared by NOAA's Office of Coast Survey for USCG.  
Routing shown on NOAA Charts 16005 and 16006

Precautionary Area  
 Routing Lane  
 Area to be Avoided  
 ATBA Point  
 Routing Point



Graphic created on February 5th, 2018. Not intended for navigation.



Proposed Bering Strait Routing Points		
Point ID	LatDDM	LonDDM
1	58° 48.91' N	167° 26.26' W
2	60° 10.86' N	168° 19.58' W
3	61° 29.47' N	167° 35.89' W
4	62° 25.14' N	167° 03.13' W
5	63° 30.44' N	167° 33.86' W
6	64° 56.08' N	168° 18.60' W
7	64° 55.19' N	168° 27.77' W
8	63° 29.57' N	167° 42.57' W
9	62° 25.26' N	167° 11.99' W
10	61° 30.52' N	167° 43.95' W
11	60° 10.74' N	168° 27.94' W
12	58° 47.65' N	167° 33.56' W
13	64° 59.22' N	168° 20.29' W
14	65° 05.00' N	168° 20.30' W
15	65° 05.00' N	168° 29.75' W
16	65° 02.60' N	168° 37.28' W
17	64° 58.14' N	168° 29.36' W
18	66° 26.57' N	168° 20.30' W
19	66° 26.57' N	168° 29.75' W
20	66° 30.64' N	168° 34.79' W
21	66° 24.59' N	169° 14.72' W
22	66° 20.83' N	169° 11.21' W
23	66° 26.90' N	168° 31.34' W
24	66° 18.05' N	169° 16.11' W
25	66° 18.05' N	169° 25.87' W
26	65° 56.20' N	169° 25.87' W
27	65° 56.20' N	169° 16.11' W
28	65° 45.52' N	169° 16.11' W
29	65° 45.52' N	169° 25.87' W
30	65° 47.69' N	169° 34.01' W
31	65° 52.82' N	169° 25.87' W
32	65° 29.65' N	169° 25.87' W
33	65° 30.71' N	169° 16.11' W
34	64° 28.31' N	171° 36.35' W
35	64° 26.14' N	171° 28.60' W
PC-A	58° 45.00' N	167° 27.81' W
PC-C	66° 30.00' N	168° 25.00' W
PC-D	66° 21.50' N	169° 21.00' W
PC-F	64° 24.36' N	171° 36.61' W

Areas to Be Avoided Points		
Point	LatDDM	LonDDM
1	60° 17.05' N	167° 37.80' W
2	59° 54.89' N	167° 40.98' W
3	59° 41.44' N	166° 49.08' W
4	59° 32.80' N	165° 28.80' W
5	60° 39.86' N	165° 41.70' W
6	65° 03.12' N	168° 19.56' W
7	64° 51.01' N	168° 14.82' W
8	64° 53.54' N	167° 46.98' W
9	65° 05.53' N	167° 52.92' W
10	63° 08.57' N	173° 31.02' W
11	62° 44.38' N	168° 58.32' W
12	62° 46.14' N	168° 21.24' W
13	63° 01.78' N	168° 04.38' W
14	63° 17.99' N	168° 12.54' W
15	63° 59.95' N	171° 06.18' W
16	63° 54.80' N	171° 50.94' W

